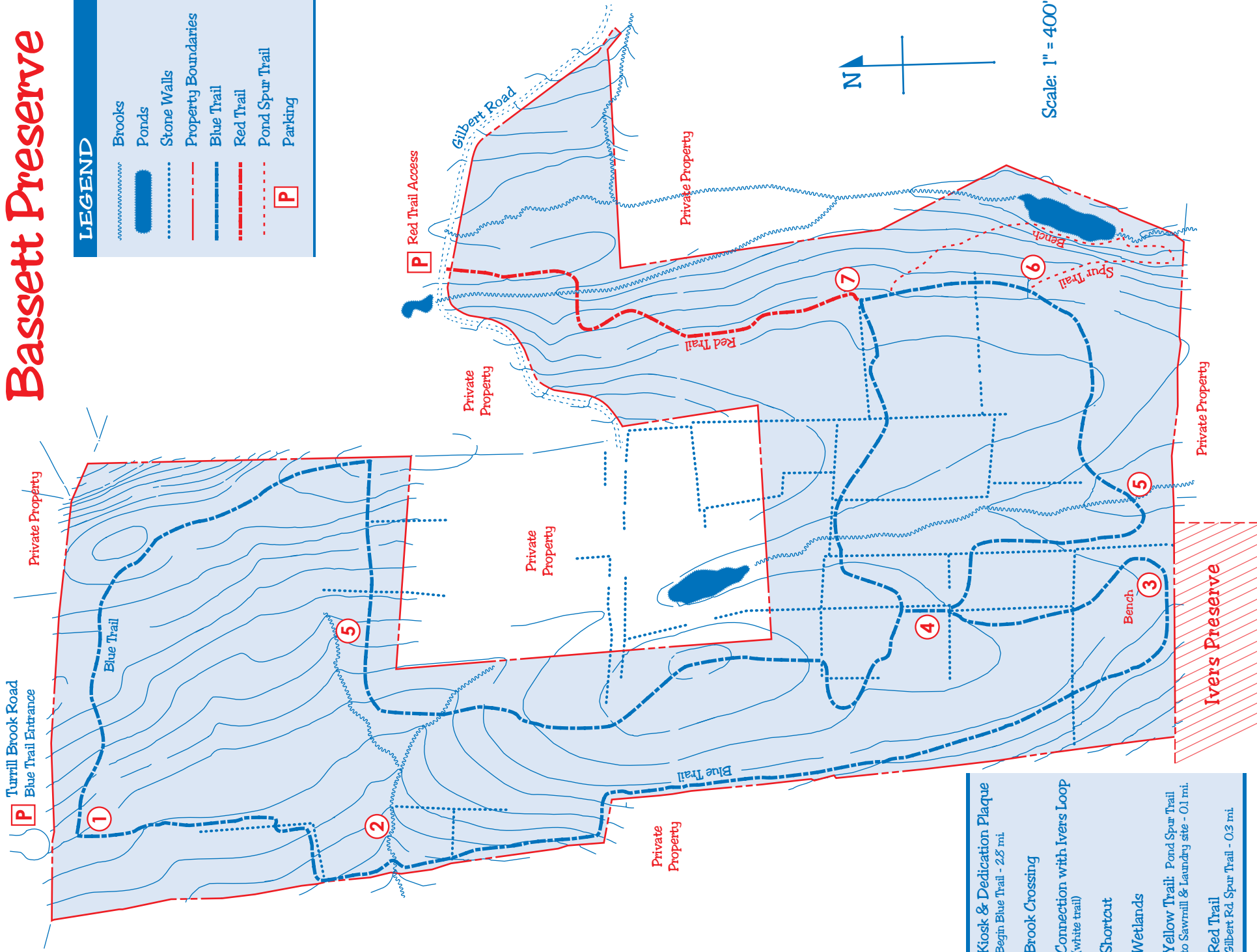


SOUTHBURY LAND TRUST Bassett Preserve



P Turrill Brook Road
Blue Trail Entrance

1

Blue Trail

5

2

5

Private Property

Private Property

P Red Trail Access

Gilbert Road

Private Property

Blue Trail

Red Trail

Private Property

7

4

5. Wetlands

3

Bench

6

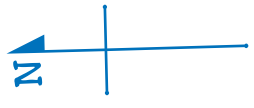
Spur Trail

Bench

7. Red Trail
Gilbert Rd. Spur Trail - 0.3 mi.

Ivers Preserve

Private Property



Bassett Preserve

Donated by Harry and Dorothy Bassett in the 1980's, Bassett Preserve encompasses 112.8 acres of lovely New England countryside.

The Preserve, 600 feet above sea level in some spots, is comprised of rolling hills, deciduous forest, ridgeline and wetlands. The western trail portions provide easy hiking through oak forest, while the east is rugged with exposed ledge and boulders. The low-lying areas are densely vegetated with trees, shrubs and ground cover. Mountain Laurel abounds and brooks and streams flow throughout the property. Crisscrossing every quadrant are the numerous stonewalls, reminders of over 200 years of agricultural use that alternated between logging, grazing and food crops. Today these same stonewalls provide shelter to hibernating salamanders and snakes, offer cover for chipmunks and other small animals, as well as direct watercourses. The southeast portion of the trail also passes the foundation ruins of a sawmill and commercial laundry operated by the Gilbert Family who owned the land from 1752 until 1940.

Please enjoy Bassett Preserve's trails, flora, fauna, geology, history, peace, quiet and trail map, which was the first in the series of Southbury Land Trust Nature Preserve Trail Maps.

If you go...

Bassett Preserve is located in the Purchase section of Southbury and accessed via Route 172, Spruce Brook Road, Purchase Brook Road, Brown Brook Road to the main entrance (Blue Trail - 2.8 miles) on Turrill Brook Road where there is parking at end of the cul-de-sac. A second entrance (**Red Trail - .3 miles**) is located on Gilbert Road, with parking for a few cars.

Preserve Policy

- Preserves are open from sunrise to sunset.
- Please stay on designated trails.
- No dumping, littering, smoking, fires, swimming, hunting, trapping.
- No motorized vehicles allowed.
- Pets must be leashed at all times.
- Wear red or orange during hunting season.
- Bring a walking stick or pole as a hiking aid and to move obstacles out of the way.

**Thank you,
Southbury Land Trust, Inc.**



SOUTHBURY LAND TRUST
Preserving natural places for people and wildlife

Harry & Dorothy Bassett Preserve Trail Map

The Southbury Land Trust, founded in 1978, is a private non-profit conservation organization dedicated to the protection and preservation of Southbury's natural resources for the enjoyment and benefit of all present and future residents.

The Trust is supported solely by memberships and donations. All dues, contributions, bequests, memorials and gifts of stock are tax deductible.

The office is located at 68 1/2 Bennett Square. (Mailing address P.O. Box 600, Southbury, CT 06488). Please call (203)264-4441 for office hours or with questions regarding membership, land donations, contributions or volunteering.

Visit us on Facebook and on the web at www.southburylandtrust.org